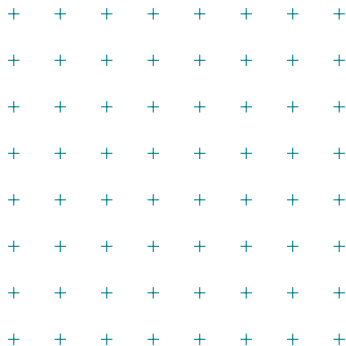


GROUPE
INSA

| THINKING
COLLECTIVELY



INTERNATIONAL STUDENT AND SO MUCH MORE

**LOOKING FORWARD TO THE
FUTURE ACTING SUSTAINABLY**



NATIONAL INSTITUTES OF
SCIENCE AND TECHNOLOGY
FRENCH GRANDES ÉCOLES



FOREWORD

We are a distinctive French Group of Graduate Engineering Schools that promotes the core values of the INSA model such as diversity, humanism, excellence, innovation and strategic foresight.

We act together to:

- enhance complementary strengths and synergies
- strengthen responsiveness and engagement

towards sustainable and relevant solutions.

SCIENCES + MEANING + IMPACT

We are committed to:

- inspiring industrials and scientists through entrepreneurship and innovation
- educating engineers, architects, landscape architects and PhD graduates, through lifelong learning and continuous adaptation
- cultivating a unique educational model, promoting diversity, international openness, inclusion and social responsibility
- fostering well-being on open and dynamic campuses.

INSA GROUP

**THINKING
COLLECTIVELY**

TOP 5 REASONS TO CHOOSE INSA

1

YOU WILL EXPERIENCE A TRAILBLAZING EDUCATION MODEL

INSA provides a diversity of tracks and disciplines that allow you to live your passion and cultivate your uniqueness. Whether you are a musician, an entrepreneur, or a high-level athlete, we allow all talents to express themselves. We make accessibility a priority for all by accompanying every student towards success and by fighting against discrimination and stigmatization. INSA offers a relevant mix of sciences, technology, and soft skills.

2

WE OFFER A DYNAMIC LEARNING AND WORKING ENVIRONMENT

with cutting-edge researchers and close collaboration with industrial partners promoting entrepreneurship, innovation and technology transfer.

3

YOU WILL BENEFIT FROM A EUROPEAN AND GLOBAL NETWORK OF OPPORTUNITIES

for studies, research and career development. Study abroad, double-degrees, internships and international classrooms are common features at INSA.

4

WE STRONGLY COMMIT TO SOCIETAL CHALLENGES

in close partnership with local and international stakeholders and we promote cross disciplinary teaching and research inspired by the UN's Societal Development Goals.

5

INSA IS A GATEWAY TO FRENCH AND EUROPEAN CULTURE

through vibrant campuses and city life, thanks to numerous student associations, open campuses and world heritage sites.

A FRENCH LEADING GROUP OF PUBLICLY-FUNDED GRADUATE SCHOOLS



13

**higher education
institutions**

7

INSA

+

6

**associated
schools**



**all located less than 3 hours
from Paris (by rail or air)**

+

1

**Undergraduate core curriculum
(the first two years of the 5-year
engineering program)**

21,900 students among them 35% of female

4,508 international students

A network of over 100,000 alumni around the world

75 specialties

442 elite sport-athletes

4 overseas offices across the world

INSA Group is a member of the **ECIU European university** project.

THE INSA “DIPLOME D’INGENIEUR”, MSc Eng DEGREE

The INSAs offer BSc-Eng, integrated 5-yr MSc-Eng. Programs (the French “Diplôme d’ingénieur”), MSc programs, post-graduate degree programs and PhD opportunities. Admission at all levels is based on academic selection. INSA degrees enjoy an excellent reputation among recruiters worldwide.

Students acquire a broad multi-disciplinary background in science, technology and engineering. Innovative teaching methods foster development of in-depth knowledge and know-how based on learner autonomy. Foreign languages and social sciences complete the curriculum, based on a student-centered pedagogy.

Highly skilled, INSA graduates have learned to be proactive, creative and entrepreneurial. Fully aware of a fast-evolving and globalized world, they are well prepared to play their role as socially responsible professionals and agents of change.

DIVERSITY
HUMANISM
EXCELLENCE
STRATEGIC
FORESIGHT

GASTON BERGER, PHILOSOPHER AND CO-FOUNDER OF INSA IN 1957

Today, INSA Group ensures the respect of values that are driving factors of the INSA model and reputation, through the Gaston Berger Institute with the support of the INSA Group Foundation.

STUDY IN FRANCE, IN FRENCH OR IN ENGLISH

International students can choose the relevant entry level according to their academic pathways:

- degree-seeking students can apply for a Bachelor's, a Master's degree or a PhD
- exchange students can enroll in a short-term summer course or benefit from a longer one-semester or full-year stay.

INTERNATIONAL OPPORTUNITIES

Thanks to a network of prestigious and globally engaged universities and corporate partners, students are offered outstanding opportunities to study abroad, do internships, or even get a double-degree (International experience is mandatory for INSA graduation).



90 double-degree programs

Over 300 partner universities in 81 countries

**20% of international students in first year,
126 nationalities**

1,963 outgoing students

554 students involved in a double-degree program

A PARTICULAR ATTENTION TO INTERNATIONAL STUDENTS

The INSAs have always been engaged in welcoming international students on campus. Dedicated courses have been implemented to provide a successful soft landing and to ensure a close interaction with local students.

INSA INTERNATIONAL TRACKS

The international tracks have been set up to foster the integration of international students taking the 5-year integrated INSA MSc Eng degree course. They vary in duration from 2 to 4 semesters at the start of the curriculum, and run parallel to the regular sections, with an identical core curriculum. Some international tracks target a particular country or region, while others recruit worldwide.

> See table page 10

COURSES TAUGHT IN ENGLISH

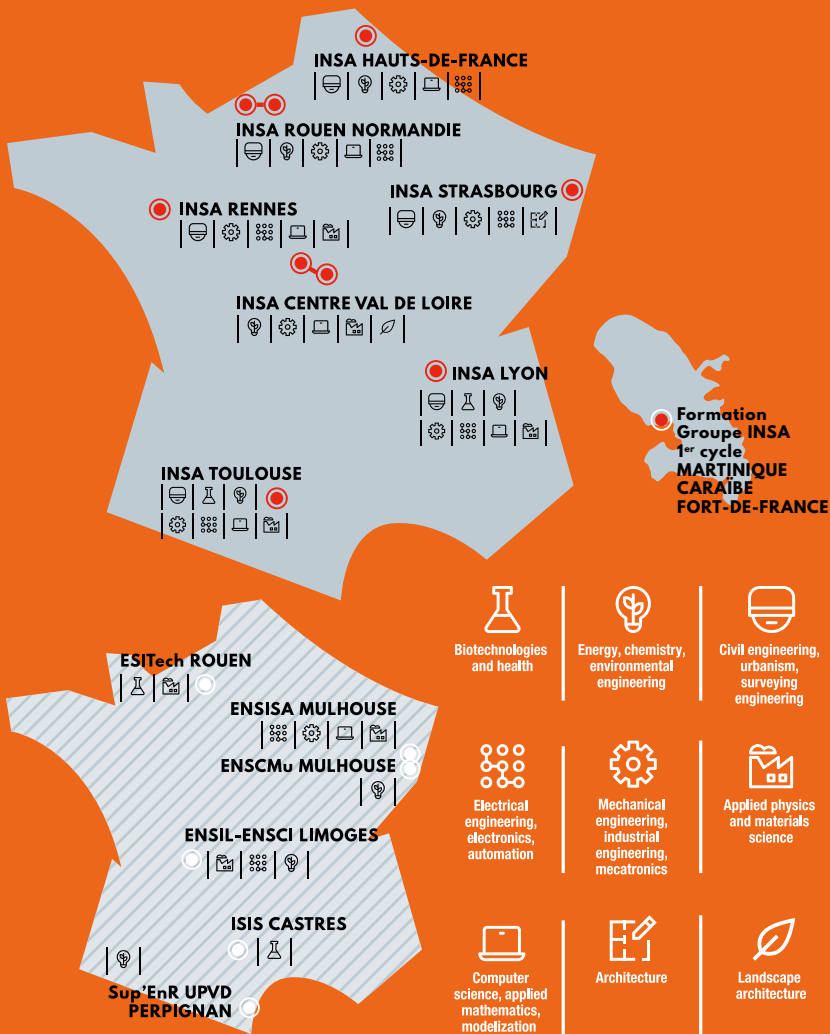
Full programs or specific tracks are available for international students at the Bachelor's and Master's degree levels.

- **Centre Val de Loire:** www.insa-centrevaldeloire.fr/en
section International
- **Hauts-de-France:** www.uphf.fr/insa-hdf/en
section International
- **Lyon:** www.insa-lyon.fr/en
section International
- **Rennes:** www.insa-rennes.fr/en
section Courses
- **Rouen Normandie:** www.insa-rouen.fr/en
section International
- **Strasbourg:** www.insa-strasbourg.fr/en
section Courses
- **Toulouse:** <https://international.insa-toulouse.fr/en>

SUMMER PROGRAMS: A GREAT OPPORTUNITY TO EXPERIENCE FRANCE AND INSA

- **Lyon:** www.insa-lyon.fr/en section International
- **Rennes:** www.insa-rennes.fr/en section International
- **Rouen Normandie:** www.insa-rouen.fr/en section International
- **Strasbourg:** www.insa-strasbourg.fr/en section Courses
- **Toulouse:** <https://international.insa-toulouse.fr/en>

9 BROAD DISCIPLINARY FIELDS



INSA INTERNATIONAL TRACKS

	Recruitment	Language(s) of instruction	Centre Val de Loire	Lyon	Rennes	Rouen Normandie	Strasbourg	Toulouse
AMERINSA	Latin America & Caribbean	French		☑				
ASINSA	Asia	French		☑				☑
DEUTSCHINSA	Worldwide	German/ French					☑	
ENG'INSA	Europe, America, Australia	English						☑
EURINSA	Europe	French		☑				
FIRE	Worldwide	French			☑			
IBERINSA	Worldwide	Spanish/ French						☑
NORGINSA	Norway	French						☑
SCAN	Worldwide	English		☑				
SIB	Worldwide	English/ French	☑			☑		

CUTTING-EDGE RESEARCH

INSA scientific teaching staff are actively involved in cutting-edge research, often run jointly with universities and national research bodies, e.g. CNRS (National Centre for Scientific Research), INSERM (National Institute of Health and Medical Research)...

Research is a core component of INSA students' education: it continuously adds value to the curriculum by ensuring that teaching is always in line with the latest advances in science and technology.

**57 internationally renowned
INSA laboratories**

1,600 academics

1,350 PhD candidates

Research teams are actively engaged in 5 main societal challenges:

- digital society and information
- energy for a sustainable development
- environment: natural, industrial, and urban environments
- global health and bioengineering
- transport: structures, infrastructures, and mobilities

RANKING

INSA Lyon and INSA Toulouse are both identified in ARWU and QS rankings.

Lyon is ranked in 10 Subjects and in the World's top 100 for "Mechanical, Aeronautical & Manufacturing Engineering".

Toulouse is ranked in 4 subjects and in the top 200 for Biotechnology.

AN INSA DEGREE, A GATEWAY TO A SUCCESSFUL CAREER

Since their creation, the INSA's have nurtured close links with companies ranging in size from fledgling start-ups and SMEs to major global corporations.

Our industrial partners make invaluable contributions to curriculum quality and collaborate further with INSA's via R&D contracts.

The INSA degrees open the door to successful careers in a wide range of fields covering all science and technology sectors in industry and research. INSA graduates' excellent employability record is confirmed by official surveys conducted during accreditation audits, and also by rankings conducted by the French media.

97%

find a job in less
than 6 months

116

student
entrepreneurs

WELCOME TO FRANCE, WELCOME TO INSA

As the INSAs are publicly-funded, the French government covers most of the standard tuition costs. International tuition fees may also be subsidized for newcomers, in line with the international strategy of the school. Exchange and double-degree students are granted a fee waiver (unless specific agreement).

FRENCH AS A FOREIGN LANGUAGE

All INSAs have dedicated language centers. On top of 10 languages, French as a Foreign language (FLE) is taught by professional teams. Summer schools and semester courses are available for international students and are strongly recommended even when they choose courses taught in English.



To ensure the best hospitality for incoming students, the INSAs follow a continuous improvement process through the French initiative the Label *Bienvenue en France* to which all INSA institutions aim to apply.

INSA HALLS OF RESIDENCE ON CAMPUS

Priority is given to international students. On-campus accommodation is part of the INSA educational model to enrich student life.

8,300 accommodations

Vibrant campus life:

- **300 clubs and student associations**
- **libraries, sports facilities (sports activities is mandatory for graduation), catering services**
- **cultural exhibits**

DEDICATED TEAMS

International offices and teaching departments ensure your successful integration and enjoyable stay.

INSA CENTRE VAL DE LOIRE

3, rue de la Chocolaterie - 41000 Blois

88, boulevard Lahitolle - 18000 Bourges

International relations office:

relationsinternationales@insa-cvl.fr

www.insa-centrevalde Loire.fr/en

**1,752 students
including 162
in landscape architecture**



© Christophe Le Toquin

Blois is a historic town situated on the banks of the river Loire, just an hour and a half away from Paris.

Bourges is a beautiful medieval town with a lively cultural scene.

Both towns are human-size cities with a friendly way of life.

INSA HAUTS-DE-FRANCE

Campus Mont-Houy

59313 Valenciennes Cedex

International relations office:

international@insa-hdf.fr

www.uphf.fr/insa-hdf/en

1,300 students



© Velvet - Wikipedia

Valenciennes is a human-sized northern metropole located between Paris and Brussels, with historic tradition in fine arts and a valued identity in sustainable transport and mobility of the future.

INSA LYON

Campus LyonTech - La Doua
20, avenue Albert Einstein
69621 Villeurbanne Cedex

International relations office:

dri@insa-lyon.fr

www.insa-lyon.fr/en

| 5,833 students



Full of history and beauty, Lyon can boast many titles: capital of gastronomy, city of cinema or capital of Roman Gaul. Lyon is in the World's top 100 and leader in France for responsible tourism (Global Destination Sustainability Index 2022).

INSA RENNES

20, avenue des Buttes de Coësmes
CS 70839
35708 Rennes Cedex 7

International relations office:

international@insa-rennes.fr

www.insa-rennes.fr/en

| 2,136 students



Rennes is the 10th largest city in France and it has the 6th largest student population. It is an internationally renowned center for higher education and research with 400,000 inhabitants, 70,000 students and 4,500 researchers.

INSA ROUEN NORMANDIE

685, avenue de l'Université
76800 Saint-Étienne-du-Rouvray

International relations office:
international@insa-rouen.fr

www.insa-rouen.fr/en

| 2,046 students



INSA Rouen Normandie is located in Rouen (Science and Engineering Campus) and Le Havre, two Norman cities rich in culture and history, in the heart of a famous and innovative industrial area, strategically close to Paris.

INSA STRASBOURG

24, boulevard de la Victoire
67084 Strasbourg Cedex

International relations office:
**relations.internationales
@insa-strasbourg.fr**

www.insa-strasbourg.fr/en

**| 2,009 students
317 in architecture**



With Germany just a tram stop away from Strasbourg and the city home to numerous nationalities thanks to the presence of the European institutions, in Strasbourg you will have a truly European experience.

INSA TOULOUSE

135, avenue de Ranguel
31077 Toulouse Cedex 4

International relations office:

direction-ri@insa-toulouse.fr

<https://international.insa-toulouse.fr/en/>

| 3,277 students



Toulouse continues to top the list of French cities where it's good to be a student in the 2022-2023 L'Étudiant rankings. Living and studying in Toulouse means enjoying 2,000 years of history in a world capital for innovation, research and development.

INSA ASSOCIATED SCHOOLS

ENSCM_U MULHOUSE

international.enscmu@uha.fr

www.enscmu.uha.fr



© Grégory Tachet

ENSIL-ENSCI LIMOGES

international.ingenieur@unilim.fr

www.ensil-ensci.unilim.fr



© Université de Limoges

ENSISA MULHOUSE

international@ensisa.fr

www.ensisa.uha.fr



© Ensisa

ESITech, UNIVERSITÉ DE ROUEN NORMANDIE

international@esitech.fr

www.esitech.fr



© Claude Rozé

ISIS CASTRES

isis@univ-jfc.fr

<https://isis.univ-jfc.fr>



© Studio Tchizz

Sup'EnR, UNIVERSITÉ DE PERPIGNAN

supenr.secretariat@univ-perp.fr

<http://sup-enr.univ-perp.fr>



© Gabriel Olalde

HOW TO APPLY

EXCHANGE PROGRAMS, DOUBLE-DEGREES AND BILATERAL AGREEMENTS

Students from partner universities wishing to come to INSA as part of an exchange or double-degree program should contact the international relations office of their home university.

INTERNATIONAL TRACKS

The online applications open in early November on the year prior to study.

> See the different application deadlines at:
www.groupe-insa.fr/en

> For further information, contact:
admiss@groupe-insa.fr

FREE MOVERS

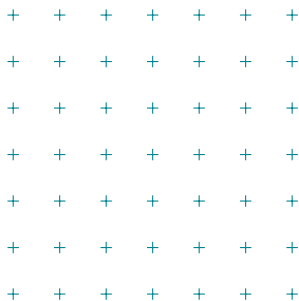
1st, 2nd, 3rd year

> Refer to:
www.groupe-insa.fr/en

> Contact:
admiss@groupe-insa.fr

OTHER COURSES

Applications for BEng, research master's programs, PhDs and other postgraduate degrees should be addressed directly to the INSA offering the course.



**SHAPE YOUR FUTURE
AND JOIN THE INSA GROUP**

**CREATIVE + INNOVATIVE THINKERS
GLOBAL + ENGAGED CITIZENS**

www.groupe-insa.fr/en

